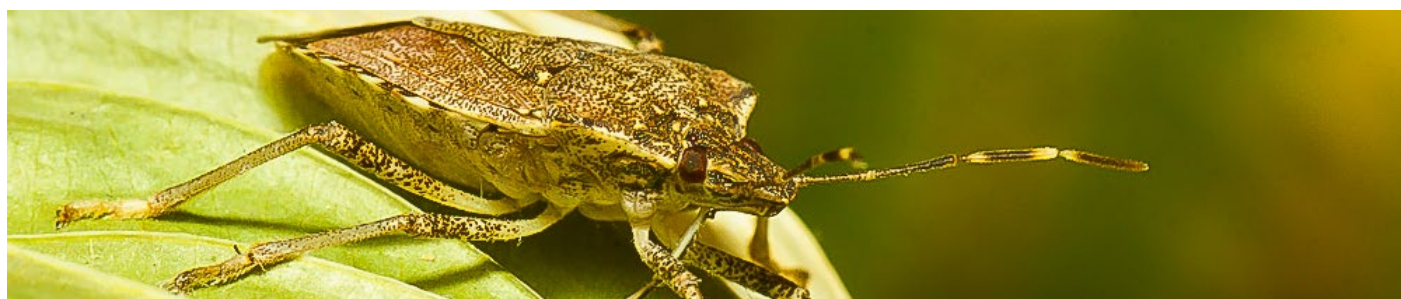


# VIEW ALL INSECT PESTS & DISEASES (INDEX)

Minnesota Department of Agriculture > Plants, Insects > Insect Pests & Diseases  
> View all Insect Pests & Diseases (Index)



Pests are organisms that are capable of harming humans, animals, plants or the environment. Pests include a variety of organisms ranging from microbes to plants to animals.

An organism that causes plant disease is called a plant pathogen. Plant pathogens are considered plant pests. Plant pathogens spread in various ways, including by insects, water, soil, air, people and other animals.

A goal of the MDA is to protect Minnesota's terrestrial plants from insect pests and pathogens. We do this through inspections and testing of nursery stock, seed, including seed potatoes, and by keeping new invasive pathogens out of the state.

Multiple approaches are used by the MDA to deal with pests. First, we try to prevent new pests from arriving in Minnesota through best management practices and regulation. Secondly, pest surveys are conducted and used to detect them soon after they arrive. If a pest is not widespread, we will try to eradicate or contain the infestation. If the pest is widely established, we use an integrated approach to manage pest populations.

If you suspect an invasive pest, write a short description of what you saw and where you saw it and take a picture if possible. Make sure to include your contact information! Send to [arrest.the.pest@state.mn.us](mailto:arrest.the.pest@state.mn.us) ([link sends email](#)). You can play a role in helping to detect invasive pests from moving into and spreading across

Minnesota. Examples of insect pests that have been or are of concern to the MDA are the brown marmorated stink bug, gypsy moth, emerald ash borer, soybean aphid and Japanese beetle.

## CONTACT US

Arrest the Pest

Plant Protection

1-888-545-6684

[Arrest.the.Pest@state.mn.us](mailto:Arrest.the.Pest@state.mn.us)(link sends email)

## View all Insect Pests & Diseases

Plant Pests & Plant Diseases

Title <input type="checkbox"/>	Category
<a href="#">Apple Ermine Moth</a>	Insect Pests
<a href="#">Asian Longhorned Beetle</a>	Insect Pests
<a href="#">Bacterial Wilt</a>	Plant Diseases
<a href="#">Bacterial Wilt and Canker of Tomato</a>	Plant Diseases
<a href="#">Balsam Woolly Adelgid</a>	Insect Pests
<a href="#">Basil Downy Mildew</a>	Plant Diseases
<a href="#">Boxwood Blight</a>	Plant Diseases
<a href="#">Brown Marmorated Stink Bug</a>	Insect Pests
<a href="#">Brown Spruce Longhorned Beetle</a>	Insect Pests
<a href="#">Chrysanthemum White Rust</a>	Plant Diseases
<a href="#">Cucumber Green Mottle Mosaic Virus</a>	Plant Diseases
<a href="#">Cucurbit Beetle</a>	Insect Pests
<a href="#">Egyptian Cottonworm</a>	Insect Pests
<a href="#">Elongate Hemlock Scale</a>	Insect Pests

<a href="#">Emerald Ash Borer</a>	Insect Pests
<a href="#">European Chafer</a>	Insect Pests
<a href="#">European Grapevine Moth</a>	Insect Pests
<a href="#">Golden Twin Spot Moth</a>	Insect Pests
<a href="#">Japanese Beetle</a>	Insect Pests
<a href="#">Light Brown Apple Moth</a>	Insect Pests
<a href="#">Lily Leaf Beetle</a>	Insect Pests
<a href="#">Mountain Pine Beetle</a>	Insect Pests
<a href="#">Old World Bollworm</a>	Insect Pests
<a href="#">Pine Shoot Beetle</a>	Insect Pests
<a href="#">Potato Cyst Nematode</a>	Plant Diseases
<a href="#">Soybean Rust</a>	Plant Diseases
<a href="#">Spotted Lanternfly</a>	Insect Pests
<a href="#">Spotted Wing Drosophila</a>	Insect Pests
<a href="#">Sudden Death Syndrome of Soybean</a>	Plant Diseases
<a href="#">Sudden Oak Death</a>	Plant Diseases
<a href="#">Swede Midge</a>	Insect Pests
<a href="#">Thousand Cankers Disease</a>	Plant Diseases
<a href="#">Velvet Longhorned Beetle</a>	Insect Pests
<a href="#">Viburnum Leaf Beetle</a>	Insect Pests

[Follow us](#)(link is external)

[Like Us](#)(link is external)

[Email Updates](#)(link is external)

[View Videos\(link is external\)](#)

## Contact the MDA

625 Robert Street North  
Saint Paul, MN 55155-2538

Phone: 651-201-6000  
Toll Free: 800-967-2474  
711 TTY



## Resources

[Ag in the Classroom\(link is external\)](#)

[Accessibility](#)

[Careers, Human Resources](#)

[Data Requests](#)

[Download Adobe Reader\(link is external\)](#)

[Visitors & Parking](#)

[Web Policies](#)

## About

[Commissioner's Office](#)

[Communications/Media](#)

[Events](#)

[Government Relations](#)

[MDA Agency Overview](#)

[Staff Directory](#)

Tribal Relations

**m** | Register to Vote ✓

© Copyright 2021 Minnesota Department of Agriculture